



COMPANY PROFILE

THE COMPANY 'SYSTEM TOOLS & ENGINEERING PRODUCTS' ESTABLISHED IN THE YEAR 1995. COMPANY IS ISO 9001-2008 TUV-SUD CERTIFIED.



WE ARE HIGHLY COMMITTED TO TOTAL CUSTOMER SATISFACTION, BEST QUALITY, TIMELY DELIVERY AND CONTINUALLY IMPROVEMENT IN THE EFFECTIVENESS OF QUALITY MANAGEMENT SYSTEM.

WE BELIEVE IN ZERO DEFECT & JUST IN TIME DELIVERY.

COMPANY HAS THE FACILITY OF LATEST WORLD CLASS MACHINE TOOLS & EQUIPMENTS.

WE HAVE A TEAM OF DEDICATED, HARDWORKING & SELF MOTIVATED ENGINEERS & TECHNICIANS & ALWAYS READY TO TAKE CHALLENGING/CRITICAL COMPONENTS FOR DEVELOPMENT.

THE COMPANY HAS MORE THAN 100 CUSTOMERS WITHIN INDIA & OVERSEAS AND WE ARE DEVELOPING/SUPPLYING ENGG. GOODS TO THEM AS PER THEIR DRAWINGS & MATERIAL SPECIFICATIONS.

WE ARE MANUFACTURING VARIETY OF COMPONENTS INCLUDING AUTOMOTIVE PARTS, TRACTOR PARTS, AGRICULTURE MACHINE PARTS, JCB PARTS, MACHINE TOOL PARTS AND OTHER ENGINEERING COMPONENTS.

WE ARE MANUFACTURING AND SUPPLYING THESE COMPONENTS TO PRINCIPAL VENDORS/OEM'S, EXPORTERS AND GLOBAL MARKET, AS PER CUSTOMER'S "DRAWINGS OR SAMPLES" ONLY.

WE FOCUS ON PRODUCING HIGHLY CUSTOMIZED PRODUCTS BASED ON CUSTOMER'S 'DRAWINGS/SAMPLES'



ITEM NAME	CAM SHAFT
MATERIAL	EN 353
SIZE	-----
TREATMENT & FINISH	CASE CARBORISED, HARDENED & TEMPERED-60-62 HRC



ITEM NAME	CAM HAUSING
MATERIAL	EN - 19
SIZE	-----
TREATMENT & FINISH	HARDENED & TEMPERED 58 - 60 HRC



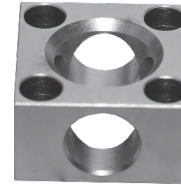
ITEM NAME	BROACHED BUSH
MATERIAL	EN8 - D
SIZE	BORE 29 X 28 SPLINES
TREATMENT & FINISH	ZINC PLATING, GOLDEN PASSIVATION



ITEM NAME	BUSH WITH OIL GROOVES
MATERIAL	EN - 8D
SIZE	ø 40 X ø50 X 40
TREATMENT & FINISH	WHITE ZN. PLATED



ITEM NAME	BUSH WITH OIL GROOVES
MATERIAL	EN - 8D
SIZE	ø 60 X ø75 X 50
TREATMENT & FINISH	WHITE ZN. PLATED



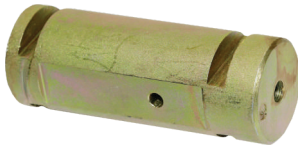
ITEM NAME	SQUARE PIN HOLDER
MATERIAL	EN - 8D
SIZE	ø 19 FITTING
TREATMENT & FINISH	-----



ITEM NAME	WELDED FLANGE FORD SPORTS CAR
MATERIAL	EN8 - D
SIZE	ø 73 BEARING
TREATMENT & FINISH	SELF



ITEM NAME	WELDED FLANGE HOLDEN SPORTS CAR
MATERIAL	EN8 - D
SIZE	ø 73 BEARING
TREATMENT & FINISH	SELF



ITEM NAME	CLEVIS PIN
MATERIAL	EN - 8
SIZE	ø 45 X 125
TREATMENT & FINISH	ZN PLATING & GOLDEN PASSIVATION



ITEM NAME	LINKAGE PIN/ BUCKET PIN
MATERIAL	EN - 8
SIZE	ø 35 X 145 WITH ELLIPTICAL PROFILE PLATE WELDED
TREATMENT & FINISH	INDUCTION HARDENED & GOLDEN PLATED



ITEM NAME	LINKAGE PIN/ BUCKET PIN
MATERIAL	EN8- D
SIZE	ø 40 X 285 WITH PROFILE PLATE WELDED
TREATMENT & FINISH	INDUCTION HARDENED & BLACK ZN. PLATED



ITEM NAME	LINKAGE PIN/ BUCKET PIN
MATERIAL	EN - 8
SIZE	ø 38 X 228 WITH PROFILE PLATE WELDED
TREATMENT & FINISH	INDUCTION HARDENED & GOLDEN PLATED



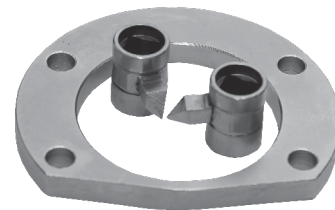
ITEM NAME	LINKAGE PIN/ BUCKET PIN
MATERIAL	EN - 8
SIZE	ø 30 X 165 WITH RECTANGULAR PLATE WELDED
TREATMENT & FINISH	INDUCTION HARDENED & BLACK ZN. PLATED



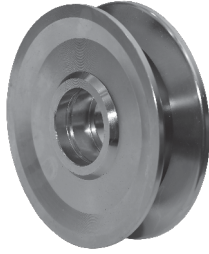
ITEM NAME	COUPLING TOYOTA
MATERIAL	EN - 8
SIZE	BORE 25 X 23 SPLINES
TREATMENT & FINISH	-----



ITEM NAME	COUPLING CONE SPORTS CAR
MATERIAL	S.G.IRON
SIZE	28/31 SPLINES
TREATMENT & FINISH	-----



ITEM NAME	PROFILE SPACER FOR SPORTS CAR + GEAR INDICATOR FOR BULLET MOTOR CYCLE
SIZE	-----
TREATMENT & FINISH	HARD CHROME PLATED



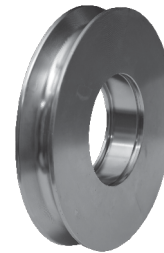
ITEM NAME	PULLEY
MATERIAL	L.C/EN8
SIZE	ø 177 X 36 TH. X ø 72 BEARING BORE (2 NOS.)
TREATMENT & FINISH	WHITE ZN. PLATED



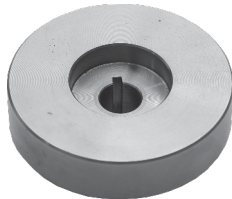
ITEM NAME	SMALL PULLEY
MATERIAL	L.C/EN8
SIZE	OD 50 X 28 X ø 35 BEARING BORE (2 NOS.)
TREATMENT & FINISH	WHITE ZN. PLATED



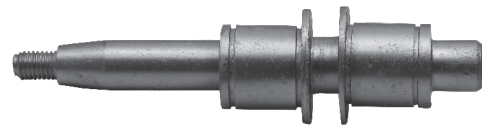
ITEM NAME	DEEP GROOVE PULLEY
MATERIAL	L.C/EN8
SIZE	150 X 40 X 38° BEARING BORE ø 47
TREATMENT & FINISH	WHITE ZN. PLATED



ITEM NAME	PULLEY
MATERIAL	L.C/EN8
SIZE	ø 157 X 28 TH. X ø 72 BEARING BORE
TREATMENT & FINISH	WHITE ZN. PLATED



ITEM NAME	BLANK FOR PUMP GEAR
MATERIAL	20MNCR5
SIZE	TAPER BORE ø 17X3° 34' 35" WITH 3MM KEYWAY BROACH
TREATMENT & FINISH	-----



ITEM NAME	CRANK SHAFT FOR GEN. SET
MATERIAL	EN8-D
SIZE	-----
TREATMENT & FINISH	-----



ITEM NAME	SHIFTER ROD FOR COMBINES
MATERIAL	EN - 8D
SIZE	22 X 412 22 X 500
TREATMENT & FINISH	INDUCTION HARDENED



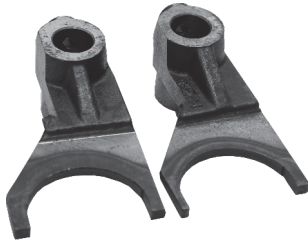
ITEM NAME	SHIFTER ROD FOR COMBINES
MATERIAL	EN - 8D
SIZE	18 X 335 18 X 407
TREATMENT & FINISH	INDUCTION HARDENED



ITEM NAME	FORK
MATERIAL	EN - 8D INVESTMENT CASTING
SIZE	BORE 15.80 X 89
TREATMENT & FINISH	PADS INDUCTION HARDENED



ITEM NAME	FORK GDR
MATERIAL	EN8 - D FORGED
SIZE	BORE 18 X CD 106
TREATMENT & FINISH	PADS INDUCTION HARDENED



ITEM NAME	FORK HD L & R SET
MATERIAL	EN8 - D FORGED
SIZE	BORE 22 X CD 106
TREATMENT & FINISH	PADS INDUCTION HARDENED



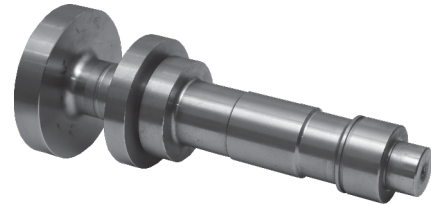
ITEM NAME	FLANGE COMPANION LCV
MATERIAL	EN8 - D
SIZE	ø 65
TREATMENT & FINISH	SELF



ITEM NAME	FORK II
MATERIAL	EN - 8D INVESTMENT CASTING
SIZE	BORE 15.80 X 90
TREATMENT & FINISH	PADS INDUCTION HARDENED



ITEM NAME	FORK LONG
MATERIAL	EN8 - D FORGED
SIZE	BORE 18 X CD 180
TREATMENT & FINISH	PADS INDUCTION HARDENED



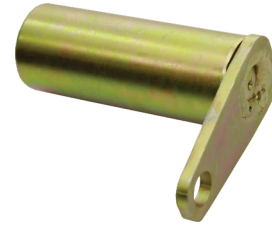
ITEM NAME	BLANK COUNTER SHAFT LCV
MATERIAL	EN-353
SIZE	-----
TREATMENT & FINISH	-----



ITEM NAME	GEAR REV. IDLER BLANK
MATERIAL	20MNCR5
SIZE	-----
TREATMENT & FINISH	-----



ITEM NAME	LINKAGE PIN/ BUCKET PIN
MATERIAL	EN8 - D
SIZE	ø 30 X 170 WITH FORK PROFILE PLATE WELDED
TREATMENT & FINISH	INDUCTION HARDENED & GOLDEN PLATED



ITEM NAME	LINKAGE PIN/ BUCKET PIN
MATERIAL	EN - 19
SIZE	ø 60 X 155 WITH PROFILE PLATE WELDED
TREATMENT & FINISH	HARDENED TEMPERED & GROUND



ITEM NAME	LINKAGE PIN/ BUCKET PIN
MATERIAL	EN - 19
SIZE	ø 60 X 155 WITH PROFILE PLATE WELDED
TREATMENT & FINISH	INDUCTION HARDENED & GOLDEN PLATED



ITEM NAME	LINKAGE PIN/ BUCKET PIN
MATERIAL	EN - 8
SIZE	ø 40 X 235 WITH RECTANGULAR PLATE WELDED
TREATMENT & FINISH	INDUCTION HARDENED & GOLDEN PLATED



ITEM NAME	LINKAGE PIN/ BUCKET PIN
MATERIAL	EN - 8
SIZE	ø 35 X 90 WITH ELLIPTICAL PROFILE PLATE WELDED
TREATMENT & FINISH	INDUCTION HARDENED & GOLDEN PLATED



ITEM NAME	LINKAGE PIN/ BUCKET PIN
MATERIAL	EN - 8
SIZE	ø 35 X 250 WITH PROFILE PLATE WELDED
TREATMENT & FINISH	INDUCTION HARDENED & GOLDEN PLATED



ITEM NAME	LINKAGE PIN/ BUCKET PIN
MATERIAL	EN - 8
SIZE	ø 45 X 265 WITH RECTANGULAR PROFILE PLATE WELDED
TREATMENT & FINISH	INDUCTION HARDENED & BLACK ZN. PLATED



ITEM NAME	LINKAGE PIN/ BUCKET PIN
MATERIAL	EN - 19
SIZE	ø 35 X 195 WITH BEND PROFILE PLATE WELDED
TREATMENT & FINISH	HARDENED TEMPERED & GROUND



SYSTEM TOOLS & ENGINEERING PRODUCTS

Mfrs. & Exporters of : Automotive, JCB, Tractor Parts & Other Engg. Products

K-98, Phase-VII, Focal Point, Ludhiana-141 010, (Pb.) INDIA.

Mobile : +91-84275-00360 Germany Contact No. : +49-15129486361

E-mail : systemtools100@yahoo.com, systemtoolsengg@gmail.com

Website : www.precisionpartsmanufacturers.com | www.engineeringpartsmanufacturers.com